

# VACCO®

## Precision Etched Parts

Aerospace • Automotive • Avionics • Electronics • Medical

### MICRO LASER CUTTING • WELDING • DRILLING

## CAPABILITIES & FEATURES

### Variety of Materials

- Stainless steel
- Polyimide
- Titanium
- Molybdenum
- Nickel alloys and more

### Range of Material Thicknesses

- .0005" to .020" or .25 mm to 1.9 mm

### Bed Capacity

- 14" x 14"

### Accuracy

- +/-1 micrometer position table capability
- +/-0.5 micrometer repeatability

### Timely Delivery

- Quick turn-around time of prototype products
- Get to marketplace sooner

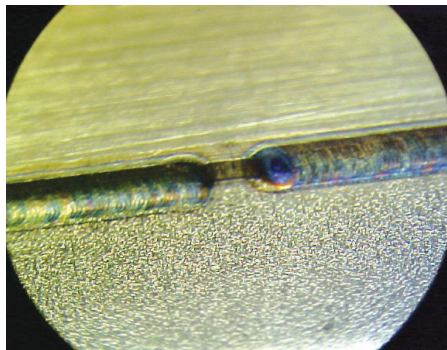
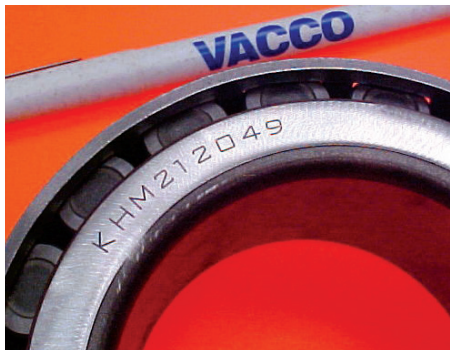
### Welding

- Deep penetration with 90% overlap hermetic pulse seal welding
- Spot welding as small as .005"
- Fiber optic laser head

### Drilling

- Holes as small as .0025 and up\*

*\*Determined by material thickness*



RELIABLE HERITAGE • INTELLIGENT SOLUTIONS



[www.vacco-etch.com](http://www.vacco-etch.com)

626.443.7121 ex.472

email: [etch@vacco.com](mailto:etch@vacco.com)